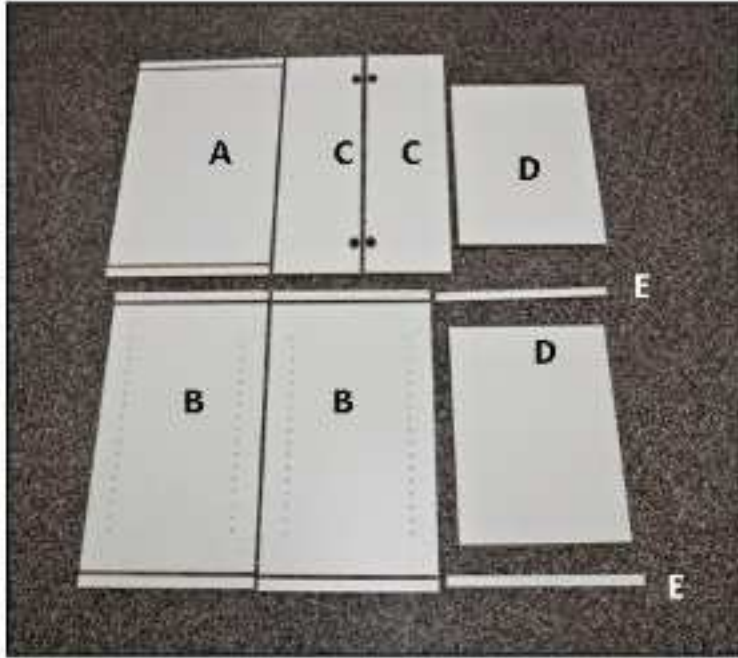


Garage Cabinet Assembly Instructions

-Please follow all instructions thoroughly and do not skip any steps in the assembly process. For additional help call 1-800-269-0417 or visit www.GarageOutfitter.com.

Step 1.—Identify All Pieces

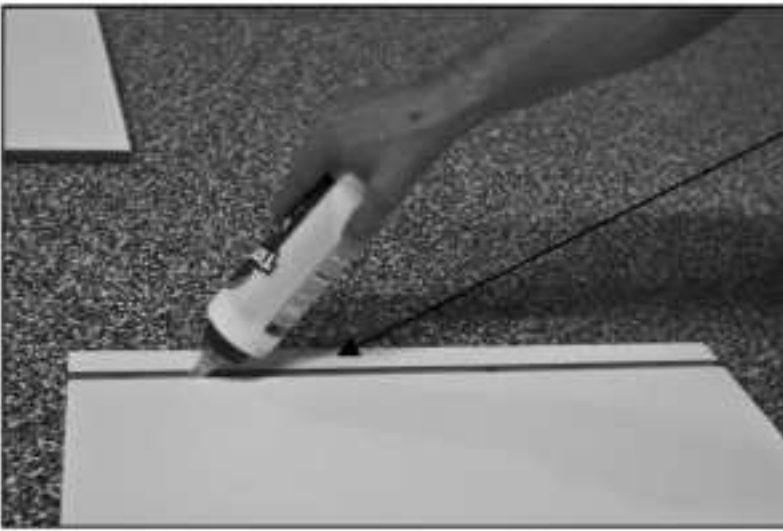


- A. Plywood back
- B. Side panels
- C. Doors
- D. Top & lower decks
- E. Filler pieces **

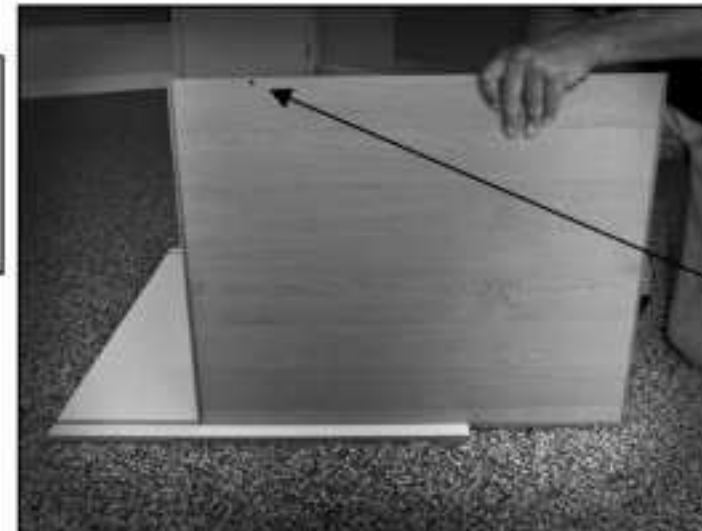


- (4) Hinges
- (4) Shelf clips
- (2) Handles w/screws
- (4-6) Small dowels
- (2) Large dowels
- (16) Hinge screws
- (4) Wood screws
- (1) Set of bumpers

Step 2.—Assemble Side Panels to Plywood Back



Apply a heavy bead of glue to dovetail joints on back panel.



Slide top & lower decks into dovetail joint on back panel.
*Holes/finished edge designate outside top and bottom of cabinet.



Apply glue bead to side panel dovetails and slide into top and lower deck panels. Note: Finished edges are facing out.

*—Use a high quality carpenter's wood glue and be sure to keep a moist towel on hand to clean off the excess glue from cabinet surfaces.



Use a brad nailer or hammer and/or finishing nails to pin and secure side panels, decks and fillers.

Step 3.—Mount Filler Pieces Into Top of Cabinet for Stacking



Apply glue to small dowels then insert into filler piece, mount to top of cabinet.



Glue and insert long dowels into top of both side panels if stacking two cabinets.



**When stacking two cabinets, use optional front filler to interlock the lower and upper cabinet together.

Part #'s:
F24
F36
F48



Finished install showing properly installed filler board. Which adds strength to the upper cabinet shelf.

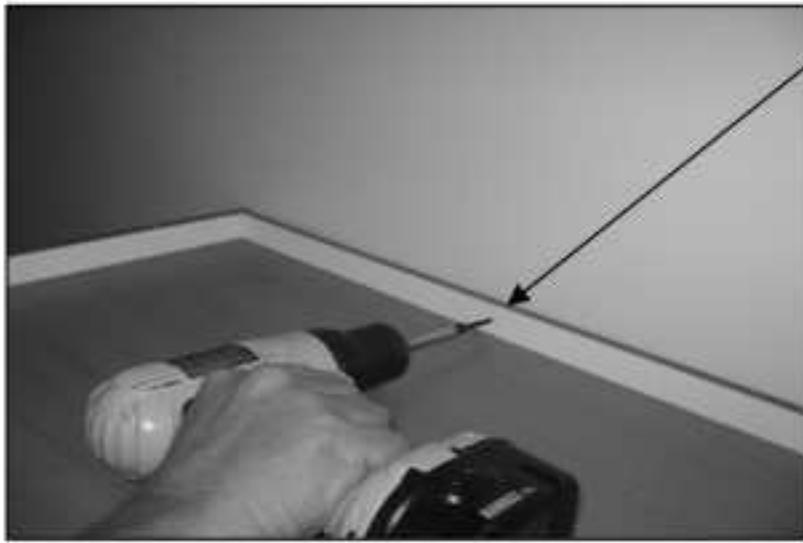
Step 4.—Mounting Multiple Cabinets to Wall



Mount perforated angle iron at desired height off of floor to support base of cabinet during mounting-*

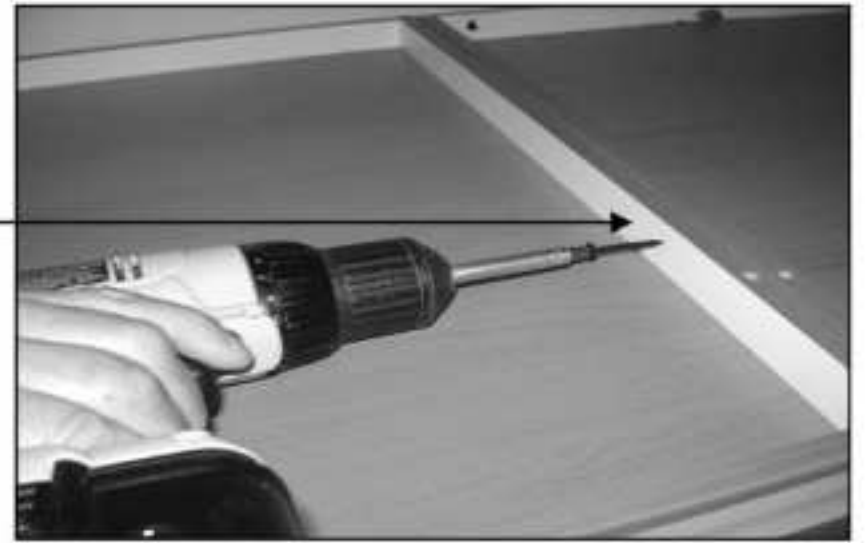


*Angle iron is preferred, however, straight fur strips may be substituted.



Locate studs in wall, mount cabinet using 2 1/2 inch black screws.

Use 1 inch screws to secure cabinets to one another.

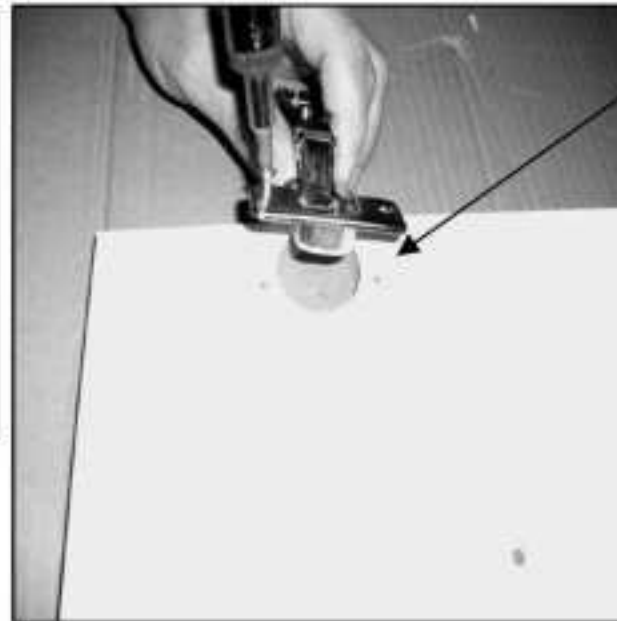


Step 5.— Mounting Door Hardware



Using a sharp 1/8 inch drill bit, finish drilling out door handle mounting holes.

Caution: Do not force drill bit into hole.

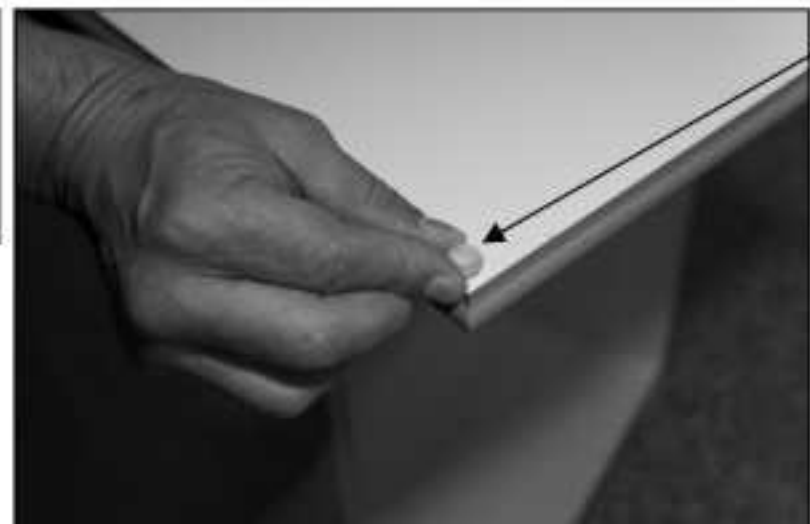


Screw six-way adjustable hinge to both door sockets. Mount door to side panels as shown below.



Attach door handles with provided hardware.

DO NOT over-tighten.



Apply bumper guards to top and bottom of inside door.

Step 6.— Optional Shelves



Install shelf clips at desired height, then insert shelf at an angle into one side, push down firmly to secure.



Assembled Cabinet